



**COMMONWEALTH OF THE BAHAMAS**

**OCCUPATIONS & WAGES  
IN THE  
HOSPITALITY SECTOR  
NEW PROVIDENCE**

**2020**

**Bahamas National Statistical Institute  
Ministry of Economic Affairs  
P.O. Box N-3904  
Nassau Bahamas**

## FOREWORD

This report provides data on persons employed in the Accommodation and Food Service Activities Industry in New Providence. The report contains information on occupation, sex; average hours worked and average basic wages per week for the year 2020. The information provided in the document was obtained from an administrative data source of leading Accommodation and Food Service Activities establishments which account for approximately fifty percent (50%) of total employment in these establishments operating in New Providence in 2020. Though limited in this respect, the results do provide valuable information on occupations, average basic wages (*not including mandatory and other gratuities for tip category workers*) and average hours worked in the Accommodation and Food Service Activities sector.

This report, previously named the ‘**Occupations & Wages Report in the Hotel Industry**’ was renamed in 2011 to ‘**Occupations & Wages in the Accommodation and Food Service Activities Industry**’ to comply with revised industrial classification outlined in the International Industrial Classification of All Economic Activities (ISIC 2008). Up to 2012, this report provided data for All Bahamas, New Providence and Grand Bahama and The Family Islands. However, this 2020 report provides data only for New Providence. The Department of Statistics wishes to acknowledge the valuable cooperation and assistance of participating agencies such as the Department of Labour, The Bahamas Hotel Employers’ Association (BHEA) and the Bahamas Hotel Catering & Allied Workers Union (BHC & AWU).

This report was prepared by **Mrs. Cindy Stuart, Statistician II, Leona Wilson, Acting Director, Ms. Tricia Thurston and Mrs. De’Antra Grant-Burrows**. We gratefully acknowledge the assistance of the web administrator responsible for mounting it on the department’s web-site.



**Leona Wilson**  
**Acting Director**

## TABLE OF CONTENTS

		PAGE NO.
Foreword		i
Table of Contents		ii
Data Highlights		iii & 1
Table 1	Distribution of Employed Persons in the Accommodation And Food Service Activities Industry by Occupational Group and Sex - New Providence: 2019	2
Table 2	Employed Persons in the Accommodation And Food Service Activities Industry by Occupational Group, Sex and Average Wage per Week – New Providence: 2019 & 2018	3
Table 3	Employed Persons in the Accommodation And Food Service Activities Industry By Occupational Group, Sex, Actual and Percentage Change in Number of Employees New Providence: 2019 & 2018	4
Table 4	Employed Persons in the Accommodation And Food Service Activities Industry by Occupational Group, Sex, Actual and Percentage Change in Average Wage per Week – New Providence: 2019 & 2018	5
Table 5	Employed Persons in the Accommodation And Food Service Activities Industry by Occupation, Sex, Average Hours Worked & Average Wage per Week – New Providence: 2019	6-10
Chart 1	Number of Persons Employed in the Accommodation And Food Service Activities Industry by Gender New Providence: 2003 - 2019	11
Chart 2	Trend of Average Weekly Wage by gender 2003-2019	12

## DATA HIGHLIGHTS

In 2020, the Covid-19 Pandemic heavily impacted tourist travel around the world, and the Bahamas was no exception. Hotel occupancy rate plunged as a result of border closures around the world that made travel difficult. The borders of the Bahamas closed in March 2020 as a result of the Covid-19 Pandemic.

In 2020, the number of workers in the **Accommodation and Food Service Activities Industry** in New Providence increased by 2,209 or 16.8%. The total number of male and female employees increased by 695 (10.9%) and 1,514 (22.40%) respectively. **See Table 3.**

**Service and Sales Workers** was the largest occupational group, accounting for 37.9% of all workers in 2020 with 5,813 employees, an increase of 718 employees or 14.1% over 2019. **See Table 3.** This was followed by the **Elementary Occupational** group with 19.0% and 2,924 employees, an increase of 664 employees or 29.4% over 2019.

Average weekly wages of workers in the Hospitality Sector increased by 11.6% from 2019 to 2020. In 2020, the average weekly wage for both male and female increased, \$126 and \$108 respectively. **See Table 4.**

**Professionals, Science and Engineering Professionals** earned the highest weekly wage of \$712. This was a decrease of (-21.1%) over 2019. **See Table 4.** **Managers** earned an average of \$596 in 2020 and \$879 in 2019, a difference of \$283. They were followed closely by **Technicians and Associate Professionals** (\$550) and **Skilled Agriculture and Fishery Workers** (\$565). **See Table 4.** However, the lowest average weekly wage of \$318 was earned in the **Plant and Machine Operators and Assemblers**. In 2019, the lowest average wage was earned in the **Elementary Occupations**.

In 2020, the total average hours worked was **35**. Within the Industry, males worked an average of **33** hours per week and females worked an average of **36** hours per week. Both averages decreased over 2019. **See Table 5.**

**OCCUPATIONS AND WAGES IN THE ACCOMMODATION AND FOOD SERVICE ACTIVITIES INDUSTRY  
NUMBER OF EMPLOYED PERSONS AND AVERAGE WAGE PER WEEK BY ISLAND AND SEX 2003-2020**

<b>EMPLOYED PERSONS IN THE HOTEL INDUSTRY</b>	<b>2003</b>	<b>2004</b>	<b>2005</b>	<b>2006</b>	<b>2007</b>	<b>2008</b>	<b>2009</b>	<b>2010</b>	<b>2011</b>	<b>2012</b>	<b>2013</b>	<b>2014</b>	<b>2015</b>	<b>2016</b>	<b>2017</b>	<b>2018</b>	<b>2019</b>	<b>2020</b>
<b>ALL BAHAMAS</b>																		
<b>TOTAL</b>	11,369	12,022	12,023	11,946	13,440	12,630	11,681	11,746	11,802	11,651	N/A	N/A	N/A	N/A	N/A	N/A	N/A	N/A
<b>MALE</b>	5,423	5,745	5,728	5,666	6,313	5,947	5,610	5,968	5,600	5,616	N/A	N/A	N/A	N/A	N/A	N/A	N/A	N/A
<b>FEMALE</b>	5,946	6,277	6,295	6,280	7,127	6,683	6,071	5,778	6,202	6,035	N/A	N/A	N/A	N/A	N/A	N/A	N/A	N/A
<b>NEW PROVIDENCE</b>																		
<b>TOTAL</b>	10,176	9,812	10,020	10,823	12,356	11,619	10,895	10,946	11,243	11,041	10,981	10,862	10,372	10,094	11,686	13,863	10,772	15,350
<b>MALE</b>	4,881	4,776	4,844	5,233	5,884	5,564	5,282	5,599	5,389	5,374	5,313	5,361	5,128	4,986	5,616	6,500	6,368	7,063
<b>FEMALE</b>	5,295	5,036	5,176	5,590	6,472	6,055	5,613	5,347	5,854	5,667	5,668	5,501	5,244	5,108	6,070	7,363	6,773	8,287
<b>GRAND BAHAMA AND THE FAMILY ISLANDS</b>																		
<b>TOTAL</b>	1,193	2,210	2,003	1,123	1,084	1,011	786	800	559	610	N/A	N/A	N/A	N/A	N/A	N/A	N/A	N/A
<b>MALE</b>	542	969	884	433	429	383	328	369	211	242	N/A	N/A	N/A	N/A	N/A	N/A	N/A	N/A
<b>FEMALE</b>	651	1,241	1,119	690	655	628	458	431	348	368	N/A	N/A	N/A	N/A	N/A	N/A	N/A	N/A
<b>AVERAGE WAGE PER WEEK</b>	<b>2003</b>	<b>2004</b>	<b>2005</b>	<b>2006</b>	<b>2007</b>	<b>2008</b>	<b>2009</b>	<b>2010</b>	<b>2011</b>	<b>2012</b>	<b>2013</b>	<b>2014</b>	<b>2015</b>	<b>2016</b>	<b>2017</b>	<b>2018</b>	<b>2019</b>	<b>2020</b>
<b>ALL BAHAMAS</b>																		
<b>TOTAL</b>	\$ 336	\$ 335	\$ 355	\$ 342	\$ 361	\$ 359	\$ 365	\$ 370	\$ 385	\$ 383	N/A	N/A	N/A	N/A	N/A	N/A	N/A	N/A
<b>MALE</b>	\$ 360	\$ 362	\$ 381	\$ 366	\$ 379	\$ 375	\$ 376	\$ 376	\$ 399	\$ 396	N/A	N/A	N/A	N/A	N/A	N/A	N/A	N/A
<b>FEMALE</b>	\$ 314	\$ 310	\$ 332	\$ 320	\$ 346	\$ 344	\$ 356	\$ 364	\$ 372	\$ 371	N/A	N/A	N/A	N/A	N/A	N/A	N/A	N/A
<b>NEW PROVIDENCE</b>																		
<b>TOTAL</b>	\$ 335	\$ 341	\$ 367	\$ 351	\$ 369	\$ 365	\$ 370	\$ 375	\$ 388	\$ 387	\$ 344	\$ 393	\$ 407	\$ 420	\$ 425	\$ 417	\$ 392	\$ 438
<b>MALE</b>	\$ 359	\$ 368	\$ 392	\$ 373	\$ 387	\$ 380	\$ 380	\$ 381	\$ 402	\$ 400	\$ 344	\$ 408	\$ 418	\$ 433	\$ 437	\$ 430	\$ 324	\$ 450
<b>FEMALE</b>	\$ 313	\$ 316	\$ 344	\$ 329	\$ 354	\$ 351	\$ 361	\$ 369	\$ 376	\$ 376	\$ 345	\$ 386	\$ 395	\$ 407	\$ 415	\$ 406	\$ 320	\$ 427
<b>GRAND BAHAMA AND THE FAMILY ISLANDS</b>																		
<b>TOTAL</b>	\$ 343	\$ 306	\$ 298	\$ 260	\$ 270	\$ 285	\$ 300	\$ 298	\$ 307	\$ 309	N/A	N/A	N/A	N/A	N/A	N/A	N/A	N/A
<b>MALE</b>	\$ 372	\$ 332	\$ 320	\$ 280	\$ 278	\$ 306	\$ 315	\$ 290	\$ 312	\$ 319	N/A	N/A	N/A	N/A	N/A	N/A	N/A	N/A
<b>FEMALE</b>	\$ 318	\$ 285	\$ 280	\$ 247	\$ 264	\$ 272	\$ 290	\$ 304	\$ 304	\$ 301	N/A	N/A	N/A	N/A	N/A	N/A	N/A	N/A

TABLE 1

**PERCENTAGE DISTRIBUTION OF EMPLOYED PERSONS IN THE  
ACCOMMODATION AND FOOD SERVICE ACTIVITIES INDUSTRY BY  
OCCUPATIONAL GROUP AND SEX - NEW PROVIDENCE: 2020**

OCCUPATIONAL GROUP	TOTAL	TOTAL %	MALE	MALE %	FEMALE	FEMALE %	SEX DISTRIBUTION	
							MALE	FEMALE
<b>TOTAL</b>	<b>15,350</b>	<b>100.0%</b>	<b>7,063</b>	<b>100.0%</b>	<b>8,287</b>	<b>100.0%</b>	<b>46.0%</b>	<b>54.0%</b>
MANAGERS	974	6.3%	384	5.4%	590	7.1%	39.4%	60.6%
PROFESSIONALS, SCIENCE AND ENGINEERING PROFESSIONALS	290	1.9%	168	2.4%	122	1.5%	57.9%	42.1%
TECHNICIANS AND ASSOCIATE PROFESSIONALS	1,416	9.2%	382	5.4%	1,034	12.5%	27.0%	73.0%
CLERICAL SUPPORT WORKERS	1,745	11.4%	1,289	18.3%	456	5.5%	73.9%	26.1%
SERVICE AND SALES WORKERS	5,813	37.9%	2,818	39.9%	2,995	36.1%	48.5%	51.5%
SKILLED AGRICULTURE AND FISHERY WORKERS	51	0.3%	11	0.2%	40	0.5%	21.6%	78.4%
CRAFT AND RELATED TRADE WORKERS	474	3.1%	301	4.3%	173	2.1%	63.5%	36.5%
PLANT AND MACHINE OPERATORS AND ASSEMBLERS	103	0.7%	96	1.4%	7	0.1%	93.2%	6.8%
ELEMENTARY OCCUPATIONS	2,924	19.0%	1,405	19.9%	1,519	18.3%	48.1%	51.9%
NOT STATED	1,560	10.2%	209	3.0%	1,351	16.3%	13.4%	86.6%

**TABLE 2**

**EMPLOYED PERSONS IN THE ACCOMMODATION AND FOOD SERVICE ACTIVITIES INDUSTRY  
BY OCCUPATIONAL GROUP, SEX AND AVERAGE WAGE PER WEEK - NEW PROVIDENCE: 2020 & 2019**

OCCUPATIONAL GROUP	2020			2019		
	TOTAL	MALE	FEMALE	TOTAL	MALE	FEMALE
	AVERAGE WAGE PER WEEK	AVERAGE WAGE PER WEEK	AVERAGE WAGE PER WEEK	AVERAGE WAGE PER WEEK	AVERAGE WAGE PER WEEK	AVERAGE WAGE PER WEEK
<b>TOTAL</b>	<b>\$438</b>	<b>\$450</b>	<b>\$427</b>	<b>\$423</b>	<b>\$427</b>	<b>\$419</b>
MANAGERS	\$596	\$590	\$600	\$879	\$963	\$825
PROFESSIONALS, SCIENCE AND ENGINEERING PROFESSIONALS	\$712	\$728	\$689	\$902	\$913	\$896
TECHNICIANS AND ASSOCIATE PROFESSIONALS	\$550	\$533	\$557	\$493	\$550	\$446
CLERICAL SUPPORT WORKERS	\$456	\$437	\$510	\$412	\$400	\$419
SERVICE AND SALES WORKERS	\$444	\$486	\$405	\$347	\$347	\$346
SKILLED AGRICULTURE AND FISHERY WORKERS	\$565	\$401	\$610	\$466	\$459	\$519
CRAFT AND RELATED TRADE WORKERS	\$388	\$316	\$514	\$399	\$412	\$357
PLANT AND MACHINE OPERATORS AND ASSEMBLERS	\$318	\$307	\$469	\$411	\$388	\$696
ELEMENTARY OCCUPATIONS	\$343	\$359	\$329	\$258	\$268	\$249
NOT STATED	\$339	\$304	\$345	-	-	-

TABLE 3

**EMPLOYED PERSONS IN THE ACCOMMODATION AND FOOD SERVICE ACTIVITIES INDUSTRY BY  
OCCUPATIONAL GROUP, SEX, ACTUAL AND PERCENTAGE CHANGE IN NUMBER OF EMPLOYEES,  
NEW PROVIDENCE: 2020 & 2019**

OCCUPATIONAL GROUP	TOTAL		CHANGE		MALE		CHANGE		FEMALE		CHANGE	
	NUMBER OF EMPLOYEES		ACTUAL	%	NUMBER OF EMPLOYEES		ACTUAL	%	NUMBER OF EMPLOYEES		ACTUAL	%
	2020	2019			2020	2019			2020	2019		
<b>TOTAL</b>	<b>15,350</b>	<b>13,141</b>	<b>2,209</b>	<b>16.8%</b>	<b>7,063</b>	<b>6,368</b>	<b>695</b>	<b>10.9%</b>	<b>8,287</b>	<b>6,773</b>	<b>1,514</b>	<b>22.4%</b>
MANAGERS	974	738	236	32.0%	384	286	98	34.3%	590	452	138	<b>30.5%</b>
PROFESSIONALS, SCIENCE AND ENGINEERING PROFESSIONALS	290	88	202	229.5%	168	32	136	425.0%	122	56	66	<b>117.9%</b>
TECHNICIANS AND ASSOCIATE PROFESSIONALS	1416	1,095	321	29.3%	382	493	-111	-22.5%	1034	602	432	<b>71.8%</b>
CLERICAL SUPPORT WORKERS	1745	949	796	83.9%	1289	352	937	266.2%	456	597	-141	<b>-23.6%</b>
SERVICE AND SALES WORKERS	5813	5,095	718	14.1%	2818	2,481	337	13.6%	2,995	2,614	381	<b>14.6%</b>
SKILLED AGRICULTURE AND FISHERY WORKERS	51	18	33	183.3%	11	16	-5	-31.3%	40	2	38	<b>1900.0%</b>
CRAFT AND RELATED TRADE WORKERS	474	474	0	0.0%	301	358	-57	-15.9%	173	116	57	<b>49.1%</b>
PLANT AND MACHINE OPERATORS AND ASSEMBLERS	103	55	48	87.3%	96	51	45	88.2%	7	4	3	<b>75.0%</b>
ELEMENTARY OCCUPATIONS	2924	2,260	664	29.4%	1405	1,163	242	20.8%	1,519	1,097	422	<b>38.5%</b>
NOT STATED	1560	2369	-809	0	1136	0	1,136	0	1,233	0	1,233	0



**TABLE 4**

**EMPLOYED PERSONS IN THE ACCOMMODATION AND FOOD SERVICE ACTIVITIES INDUSTRY BY  
OCCUPATIONAL GROUP, SEX, ACTUAL AND PERCENTAGE CHANGE IN AVERAGE WAGE PER WEEK,  
NEW PROVIDENCE: 2020 & 2019**

OCCUPATIONAL GROUP	TOTAL		CHANGE		MALE		CHANGE		FEMALE		CHANGE	
	AVERAGE WAGE PER WEEK		ACTUAL	%	AVERAGE WAGE PER WEEK		ACTUAL	%	AVERAGE WAGE PER WEEK		ACTUAL	%
	2020	2019			2020	2019			2020	2019		
<b>TOTAL</b>	<b>\$438</b>	<b>\$392</b>	<b>\$45</b>	<b>11.6%</b>	<b>\$450</b>	<b>\$324</b>	<b>\$126</b>	<b>38.9%</b>	<b>\$427</b>	<b>\$320</b>	<b>\$108</b>	<b>33.7%</b>
MANAGERS	\$596	\$879	-\$283	-32.2%	\$590	\$963	-\$374	-38.8%	\$600	\$825	-\$225	-27.3%
PROFESSIONALS, SCIENCE AND ENGINEERING PROFESSIONALS	\$712	\$902	-\$190	-21.1%	\$728	\$913	-\$185	-20.2%	\$689	\$896	-\$207	-23.1%
TECHNICIANS AND ASSOCIATE PROFESSIONALS	\$550	\$493	\$57	11.7%	\$533	\$550	-\$18	-3.2%	\$557	\$446	\$111	24.9%
CLERICAL SUPPORT WORKERS	\$456	\$412	\$44	10.7%	\$437	\$400	\$36	9.1%	\$510	\$419	\$91	21.7%
SERVICE AND SALES WORKERS	\$444	\$347	\$97	28.1%	\$486	\$347	\$139	39.9%	\$405	\$346	\$59	17.0%
SKILLED AGRICULTURE AND FISHERY WORKERS	\$565	\$466	\$100	21.4%	\$401	\$459	-\$58	-12.7%	\$610	\$519	\$92	17.7%
CRAFT AND RELATED TRADE WORKERS	\$388	\$399	-\$11	-2.7%	\$316	\$412	-\$97	-23.4%	\$514	\$357	\$156	43.8%
PLANT AND MACHINE OPERATORS AND ASSEMBLERS	\$318	\$411	-\$93	-22.5%	\$307	\$388	-\$81	-20.9%	\$469	\$696	-\$227	-32.6%
ELEMENTARY OCCUPATIONS	\$343	\$258	\$85	32.9%	\$359	\$268	\$92	34.2%	\$329	\$249	\$80	32.1%
NOT STATED	\$339	\$0	\$339	\$0	\$304	\$0	\$304	\$0	\$345	\$0	\$345	0

TABLE 5

**EMPLOYED PERSONS IN THE ACCOMMODATION AND FOOD SERVICE ACTIVITIES INDUSTRY BY OCCUPATION, SEX,  
AVERAGE HOURS WORKED AND AVERAGE WAGE PER WEEK - NEW PROVIDENCE: 2020**

OCCUPATION	AVERAGE HOURS WORKED			AVERAGE WAGE PER WEEK		
	TOTAL	MALE	FEMALE	TOTAL	MALE	FEMALE
<b>TOTAL</b>	<b>35</b>	<b>33</b>	<b>36</b>	<b>438</b>	<b>450</b>	<b>427</b>
<b>MANAGERS</b>	<b>39</b>	<b>40</b>	<b>39</b>	<b>596</b>	<b>590</b>	<b>600</b>
Managing Directors and Chief Executives	40	40	40	876	900	860
Finance Managers	40	40	40	573	705	537
Personnel and Industrials Relation Managers (Non-Governmental)	40	40	40	451	435	575
Policy and Planning Managers	40	-	40	279	-	279
Business Services and Administration Managers Not Elsewhere Classified	40	40	40	669	850	489
Sales and Marketing Managers	40	40	40	501	829	463
Advertising and Public Relations Managers	40	40	40	872	366	921
Construction Managers	40	40	-	2,337	2,337	-
Supply, Distribution and Related Managers	40	40	40	792	702	877
Information and Communications Technology Service Managers	40	40	80	1,124	980	1,182
Financial and Insurance Services Branch Managers (Also Includes Departmental Man	40	40	40	1,289	1,343	1,235
Hotel and Motel Managers	40	40	40	778	784	771
Restaurant Managers (In Hotel)	40	40	40	685	792	635
Bars, Lounges and Night Clubs (In Hotel)	40	40	40	716	762	647
Retail and Wholesale Trade Managers	40	-	40	577	-	577
Sports, Recreation and Cultural Centre Managers	40	40	40	584	585	583
Services Managers Not Elsewhere Classified	30	40	4	547	499	668
<b>PROFESSIONALS, SCIENCE AND ENGINEERING PROFESSIONALS</b>	<b>40</b>	<b>40</b>	<b>41</b>	<b>712</b>	<b>728</b>	<b>689</b>
Specialist Medical Practitioners	40	40	-	1,538	1,538	-
Nursing Professionals	40	-	40	433	-	433
Paramedical Practitioners	40	40	-	1,030	1,030	-
Environmental and Occupational Health and Hygiene Professionals	40	40	-	938	938	-
Accountants	40	40	40	993	1,155	688
Accountants (Non-Certified)	40	40	40	745	766	732
Management and Organization Analysts	40	40	-	412	412	-
Policy Administration Professionals	40	40	40	450	442	515
Training and Staff Development Professionals	40	40	40	483	323	831
Systems Analysts	40	40	40	463	411	608

TABLE 5

**EMPLOYED PERSONS IN THE ACCOMMODATION AND FOOD SERVICE ACTIVITIES INDUSTRY BY OCCUPATION, SEX,  
AVERAGE HOURS WORKED AND AVERAGE WAGE PER WEEK - NEW PROVIDENCE: 2020**

OCCUPATION	AVERAGE HOURS WORKED			AVERAGE WAGE PER WEEK		
	TOTAL	MALE	FEMALE	TOTAL	MALE	FEMALE
Software & Applications Developers and Analysts, N.E.C.	40	-	40	\$730	-	\$0
Database Designers and Administrators	40	-	40	\$364	-	-
Systems Administrators	40	40	40	\$906	\$866	\$986
Lawyers	40	40	40	\$1,097	-	\$331
Archivists and Curators	40	40	-	\$1,154	\$1,154	-
Creative and Performing Artists Not Elsewhere Classified	40	-	40	\$776	-	\$776
<b>TECHNICIANS AND ASSOCIATE PROFESSIONALS</b>	<b>40</b>	<b>40</b>	<b>40</b>	<b>\$550</b>	<b>\$533</b>	<b>\$557</b>
Incinerator and Water Treatment Plant Operators	38	38	-	\$383	\$383	-
Ships' Deck officers and Pilots	40	40	-	\$940	\$940	-
Pharmaceutical Technicians and Assistants	40	40	40	\$723	\$3,179	\$232
Veterinary Technicians and Assistants	40	-	40	\$1,923	-	\$1,923
Physiotherapy Technicians and Assistants	40	40	40	\$574	\$476	\$614
Environmental and Occupational Health Inspectors and Associates	40	40	40	\$2,896	\$10,284	\$433
Accounting Associate Professionals	39	38	40	\$384	\$292	\$511
Buyers	40	40	40	\$562	\$545	\$612
Conference and Event Planners	40	40	40	\$599	\$591	\$605
Employment Agents and Contractors	40	40	40	\$930	\$738	\$1,122
Real Estate Agents and Property Managers	-	-	-	-	-	-
office Supervisors	40	40	40	\$330	\$494	\$309
Legal Secretaries	40	40	-	\$842	\$842	-
Administrative and Executive Secretaries	40	40	40	\$987	\$700	\$1,145
Customs and Border Inspectors	40	40	40	\$775	\$1,267	\$529
Athletes and Sports Players	40	40	-	\$1,346	\$1,346	-
Sports Coaches, Instructors and officials	40	40	-	\$1,052	\$1,052	-
Fitness and Recreation Instructors and Program Leaders	38	38	40	\$484	\$485	\$458
Photographers	-	-	-	-	-	-
Interior Designers and Decorators	40	40	40	\$433	\$473	\$425
Chefs	40	40	40	\$583	\$445	\$618
Information and Communications Technology Operations Technicians	40	40	40	\$529	\$668	\$436
Information and Communication Technology User Support Technicians	40	40	40	\$427	\$379	\$432
Computer Network and Systems Technicians	38	38	38	\$459	\$464	\$443
Broadcasting and Audio-Visual Technicians	38	38	38	\$1,240	\$620	-

Table 5

**EMPLOYED PERSONS IN THE ACCOMMODATION AND FOOD SERVICE ACTIVITIES INDUSTRY BY OCCUPATION, SEX,  
AVERAGE HOURS WORKED AND AVERAGE WAGE PER WEEK - NEW PROVIDENCE: 2020**

OCCUPATION	AVERAGE HOURS WORKED			AVERAGE WAGE PER WEEK		
	TOTAL	MALE	FEMALE	TOTAL	MALE	FEMALE
<b>CLERICAL SUPPORT WORKERS</b>	<b>40</b>	<b>40</b>	<b>39</b>	<b>\$456</b>	<b>\$437</b>	<b>\$510</b>
General office Clerks	38	38	38	\$308	\$247	\$334
Secretaries (General)	40	40	40	\$298	\$290	\$1,181
Data Entry Clerks	38	38	-	\$444	\$444	-
Bookmakers, Croupiers and Related Gaming Workers	40	40	40	\$499	\$450	\$655
Telephone Switchboard Operators	38	40	38	\$412	\$306	\$428
Hotel Receptionists	39	39	39	\$583	\$650	\$536
Receptionists (General)	40	40	-	\$629	\$629	-
Client Information Workers Not Elsewhere Classified	38	38	38	\$412	\$412	\$412
Accounting and Bookkeeping Clerks	39	38	39	\$503	\$469	\$525
Payroll Clerks	40	40	40	\$389	\$276	\$436
Stock Clerks	40	40	40	\$771	\$765	\$887
Production Clerks	40	-	40	\$575	-	\$575
Mail Carriers and Sorting Clerks	38	-	38	\$379	-	\$379
Personnel Clerks	40	40	40	\$392	\$405	\$249
<b>SERVICE AND SALES WORKERS</b>	<b>39</b>	<b>39</b>	<b>39</b>	<b>\$444</b>	<b>\$486</b>	<b>\$405</b>
Travel Guides	40	39	40	\$607	\$683	\$597
Cooks	38	39	38	\$440	\$624	\$328
Pantry Worker In Hotel & Restaurant	38	38	38	\$225	\$257	\$217
Waiters (In Hotel)	38	38	38	\$400	\$402	\$397
Bartenders (In Hotel)	38	38	38	\$404	\$402	\$407
Maitre'd and Food & Beverage Supervisors ( Restaurant Or Bar In Hotel)	40	40	40	\$562	\$533	\$642
Cleaning & Housekeeping Supervisors In Hotels	40	40	39	\$602	\$605	\$598
Domestic Housekeepers	38	38	39	\$261	\$256	\$390
Building Caretakers	39	38	40	\$471	\$519	\$420
Pet Groomers and Animal Care Workers	40	40	40	\$267	\$246	\$322
Personal Services Workers Not Elsewhere Classified	38	38	38	\$318	\$332	\$313
Stall and Market Salespersons	38	38	38	\$412	\$412	\$412
Shop Keepers	40	40	0	\$18	\$136	\$0
Shop Supervisors	39	39	39	\$570	\$563	\$719
Shop Sales Assistants	38	40	38	\$447	\$346	\$481

TABLE 5

**EMPLOYED PERSONS IN THE ACCOMMODATION AND FOOD SERVICE ACTIVITIES INDUSTRY BY OCCUPATION, SEX,  
AVERAGE HOURS WORKED AND AVERAGE WAGE PER WEEK - NEW PROVIDENCE: 2020**

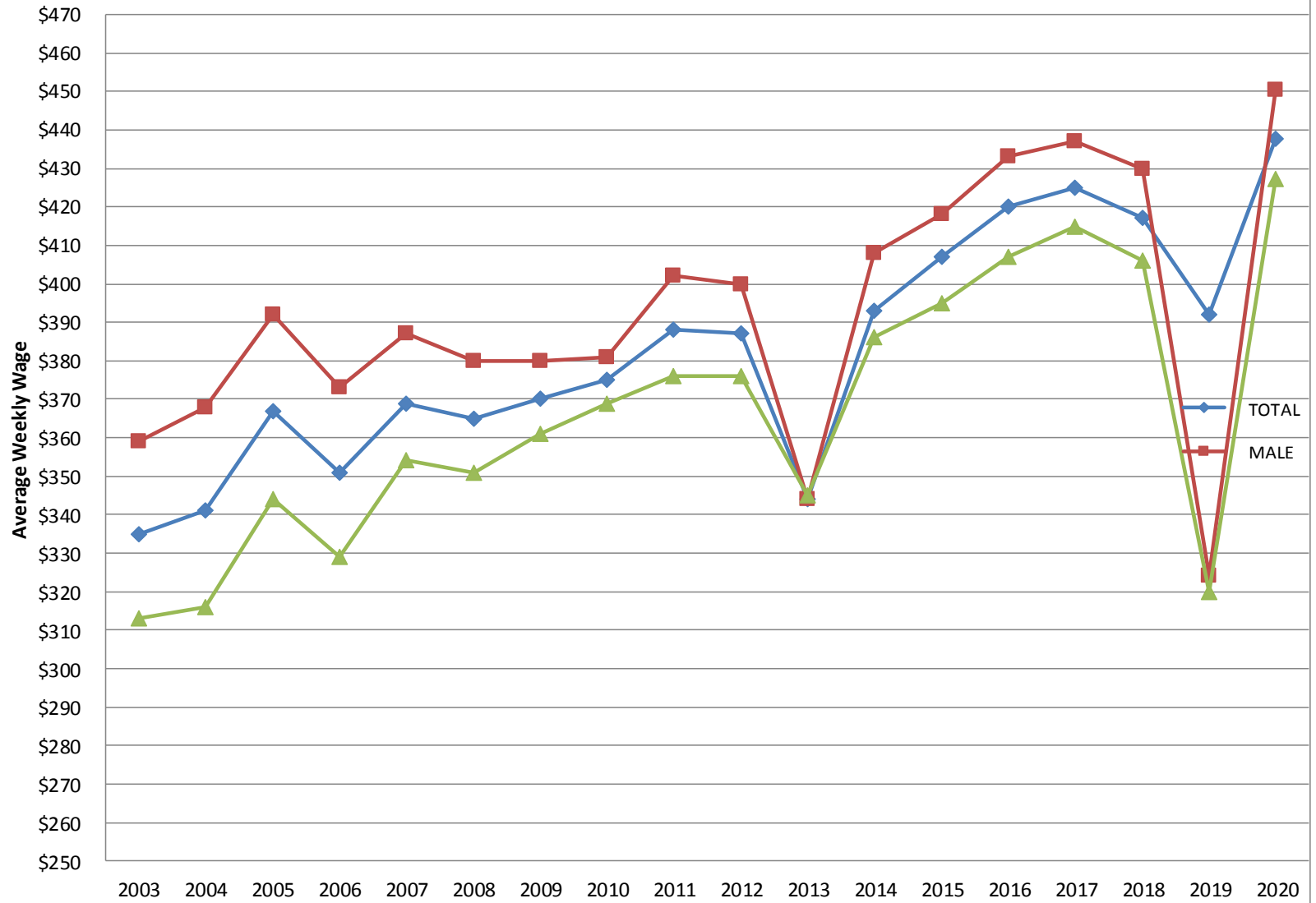
OCCUPATION	AVERAGE HOURS WORKED			AVERAGE WAGE PER WEEK		
	TOTAL	MALE	FEMALE	TOTAL	MALE	FEMALE
Cashiers and Ticket Clerks	38	-	38	\$352	-	\$352
Cashiers (Restaurants and Bars In Hotel)	38	38	38	\$395	\$420	\$360
Cashiers (Restaurants and Bars Not In Hotel)	82	59	96	\$428	\$428	\$427
Service Station Attendants	38	38	-	\$317	\$317	-
Food Service Counter Attendants	38	38	38	\$355	\$353	\$355
Sales Workers Not Elsewhere Classified	38	38	38	\$265	\$266	\$265
Child Care Workers	40	-	40	\$570	-	\$570
Security Guards	40	40	40	\$684	\$672	\$693
Protective Services Workers Not Elsewhere Classified	38	38	39	\$396	\$371	\$472
<b>SKILLED AGRICULTURAL, FORESTRY AND FISHERY WORKERS</b>	<b>40</b>	<b>38</b>	<b>40</b>	<b>\$565</b>	<b>\$401</b>	<b>\$610</b>
Gardeners, Horticultural and Nursery Growers	38	38	40	\$399	\$401	\$388
Aquarist	40	-	40	\$622	-	\$622
<b>CRAFT AND RELATED TRADE WORKERS</b>	<b>38</b>	<b>38</b>	<b>39</b>	<b>\$388</b>	<b>\$316</b>	<b>\$514</b>
Bricklayers and Related Workers	38	38	-	\$433	\$433	-
Carpenters and Joiners	38	38	38	\$269	\$265	\$336
Glaziers	40	-	40	\$692	-	\$692
Plumbers and Pipe Fitters	38	38	38	\$395	\$397	\$332
Painters and Related Workers	38	38	38	\$346	\$350	\$330
Toolmakers and Related Workers	38	38	38	\$361	\$348	\$415
Motor Vehicle Mechanics and Repairers	38	38	-	\$335	\$335	-
Agricultural and Industrial Machinery Mechanics and Repairers	38	38	38	\$294	\$274	\$328
Handicraft Workers In Wood, Basketry and Related Materials	40	-	40	\$506	-	\$506
Printers	38	38	-	\$497	\$497	-
Building and Related Electricians	38	38	38	\$542	\$558	\$356
Butchers, Fishmongers and Related Food Preparers	38	38	38	\$291	\$216	\$404
Bakers, Pastry-Cooks and Confectionery Makers	38	40	38	\$354	\$641	\$211
Tailors, Dressmakers, Furriers and Hatters	40	40	40	\$824	\$491	\$859
<b>PLANT AND MACHINE OPERATORS AND ASSEMBLERS</b>	<b>39</b>	<b>39</b>	<b>40</b>	<b>\$318</b>	<b>\$307</b>	<b>\$469</b>
Laundry Machine Operators	40	40	40	\$263	\$255	\$390
Steam Engine and Boiler Operators	38	38	-	\$506	\$506	-

TABLE 5

**EMPLOYED PERSONS IN THE ACCOMMODATION AND FOOD SERVICE ACTIVITIES INDUSTRY BY OCCUPATION, SEX,  
AVERAGE HOURS WORKED AND AVERAGE WAGE PER WEEK - NEW PROVIDENCE: 2020**

OCCUPATION	AVERAGE HOURS WORKED			AVERAGE WAGE PER WEEK		
	TOTAL	MALE	FEMALE	TOTAL	MALE	FEMALE
Car, Taxi and Van Drivers	38	38	40	\$441	\$427	\$528
Heavy Truck and Lorry Drivers	38	38	-	\$372	\$372	-
Earthmoving and Related Plant Operators	38	38	-	\$264	\$264	-
Crane, Hoist and Related Plant Operators	38	38	-	\$274	\$274	-
Ships' Deck Crews and Related Workers	38	38	-	\$286	\$286	-
<b>ELEMENTARY OCCUPATIONS</b>	<b>27</b>	<b>22</b>	<b>30</b>	<b>\$343</b>	<b>\$359</b>	<b>\$329</b>
Cleaners and Helpers In Hotels	38	39	38	\$339	\$362	\$332
Hand Launderers and Pressers	38	38	38	\$302	\$304	\$301
Other Cleaning Workers	38	38	-	\$362	\$362	-
Garden and Horticultural Labourers	38	38	38	\$450	\$444	\$485
Kitchen Helpers	38	38	38	\$327	\$345	\$296
Sweepers and Related Labourers	40	40	-	\$542	\$542	-
Messengers, Package Deliverers and Luggage Porters	39	39	39	\$453	\$427	\$847
Odd Job Persons	41	76	38	\$379	\$320	\$384
Meter Readers and Vending-Machine Collectors	38	38	-	\$355	\$355	-
Elementary Workers Not Elsewhere Classified	39	39	39	\$334	\$318	\$369

### Trend of Average Weekly Wage by Gender 2003-2020



### Number of Employed Persons in the Accommodation and Food Service Activities Industry by Gender 2003-2020

